

Light Rail

Emergency works at Convention, John St Square, Wentworth Park to Lilyfield

Monday 4 to Thursday 7 March 2019

What we're doing

Transdev Sydney, operators of the light rail network, and our partner companies have been conducting some testing along the light rail corridor.

As a result of the testing, essential rail track replacement works are being undertaken at Convention, John St Square, Wentworth Park, Glebe and Lilyfield areas – see location maps below. These works will occur at night from midnight to 5am.

These rail track replacement works will involve cutting, grinding and welding activity, and will likely generate noise.

Prior to and after the works, there will be set-up and removal of equipment which may also generate noise.

A track vehicle will be used to transport rail from the:

- Glebe access gate at Railway Street to worksite locations at John St Square, Wentworth Park and Glebe areas.
- Lilyfield access gate at Brenan St to the worksite location between Rozelle Bay and Lilyfield.

Also, the Pyrmont access gate at Edward Street will be used to access the worksite location at Convention.

We apologise for the unavoidable short notice and for any inconvenience caused. We understand this work may have an impact on you and your neighbours, and we appreciate your patience and understanding. The NSW Environmental Protection Authority has been notified of these works.

On the following pages are location maps of the works, with the areas of work indicated in red.

Contact us

For enquires and feedback visit transportnsw.info

Between 12am (midnight) to 6am call 02 8584 5214

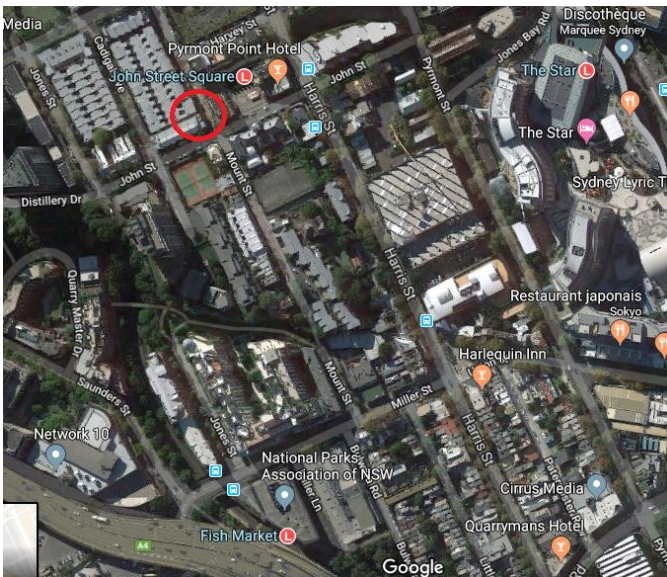
Light Rail

Location maps of works

Convention.

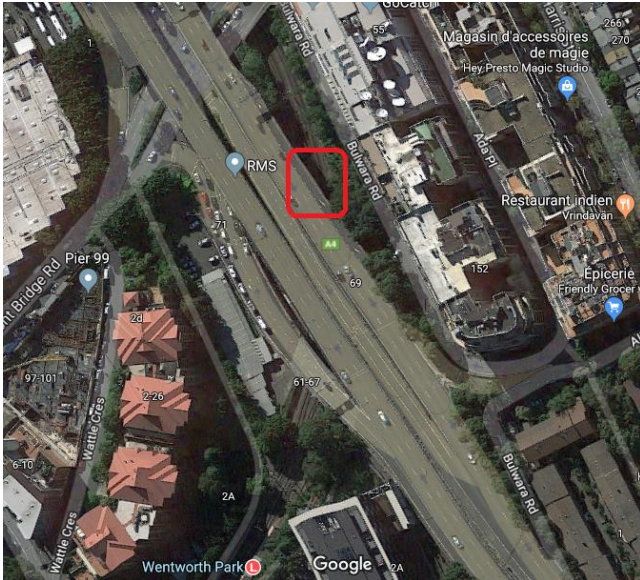


John St Square.

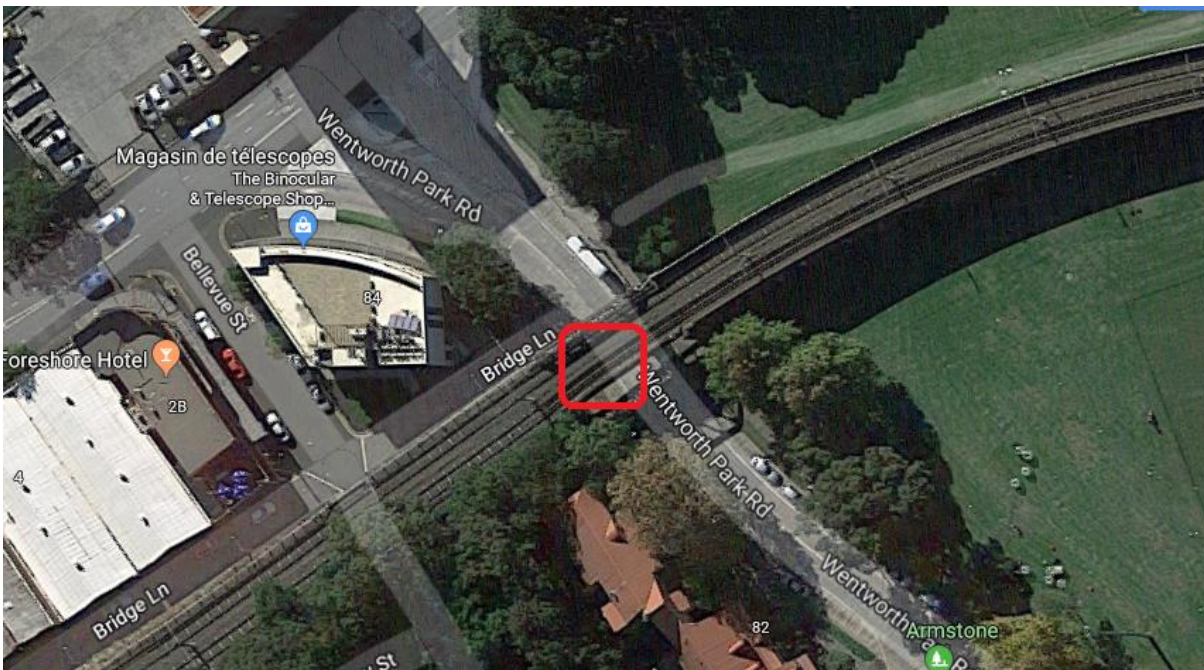


Light Rail

Wentworth Park.



Glebe.



Light Rail

Lilyfield.

